



SCF840-D-N



NFPA20 – NFPA70



DISRUPTIVE TECHNOLOGY

Wifi COMMUNICATION

EMBEDDED WEB

AMAZING FEATURES

COLOURFULL DISPLAY



DIESEL ENGINE DRIVEN CONFIGURABLE-PROGRAMMABLE FIRE PUMPS SET CONTROL PANEL

SCF840-D-N



DIESEL ENGINE DRIVEN CONFIGURABLE-PROGRAMMABLE FIRE PUMPS SET CONTROL PANEL

MAIN FEATURES

Standards and technical regulations	
Compliance with standards and technical regulations	NFPA20 Ed. 2019
	NFPA70
	EN 61439-1 Low-voltage switchgear
Electrical features and batteries	
Incoming line voltage and frequency	From 85Vac to 265 Vac 50-60Hz depending on model
Nominal battery voltage	12 Vdc or 24 Vdc depending on model
Pump and system protections	
Total system alarms	42
Design features	
Enclosure	IP65 Protected from total dust ingress (NEMA 4)
	Impact rating: IK10 (except for display)
	Fireproof grade: Fire extinguishes <30s
Display	TFT colour 4.3" 480x272 px
Buzzer	75 dB measured at 1m
Wiring	Halogen free
	Fire resistance: RZ1 according to EN50200 (830° during 90min)
Pressure transducer	1 pressure measuring device using pressure transducers 0-100bar / 4-20mA It can be used to monitor the system pressure of the pump The demand pressure to start and stop the pump are configurable
Pressure Switch	Monitored to prevent short-circuit or open-circuit faults
Working temperatures	Recommended: -5°C to 40°C (tested up to 60°C)
Relative humidity (non-condensing)	Functional: 20 to 95%.
Cooling:	Natural convection
Maximum altitude:	2000m
Pollution degree	2
Overvoltage category:	II
Pump start methods	
Automatic Mode	 <p>Pressure switch line: Low system pressure Manometer: system pressure Water level contact: Low priming tank level Remote start contact</p>
Manual Mode	
Test Mode	
	"Battery A" and "Battery B" press buttons in front panel
	Manual start press button to evaluate the status of the emergency start button



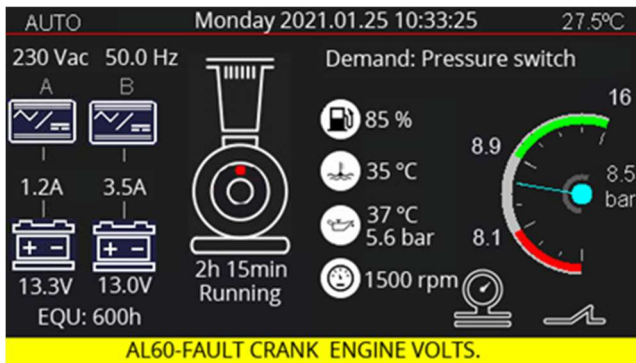
SCF840-D-N



DIESEL ENGINE DRIVEN CONFIGURABLE-PROGRAMMABLE FIRE PUMPS SET CONTROL PANEL

Measuring instruments	
Batteries	2 voltmeters, battery voltage 2 battery charge current ammeters
Engine	Engine cooling temperature (water) Engine cooling oil temperature Oil pressure Fuel tank level Engine speed in rpm
General System	1 Voltmeter: Supply voltage AC. Accuracy >1% 1 Manometer: System pressure (4-20mA pressure sensor required) 1 Flow Meter (manual flow input / pulse output / 4/ 20 mA sensor)
Communications	
Wifi	Embedded Web access
Ethernet: Modbus / TCP-IP	SCOM903 optional module not included as standard
RS485 Modbus / RTU	SCOM901 optional module not included as standard
Voltage free contacts	6 potential free double relays: 30Vdc - 0.3A 1 potential free double relay 230Vdc-10A

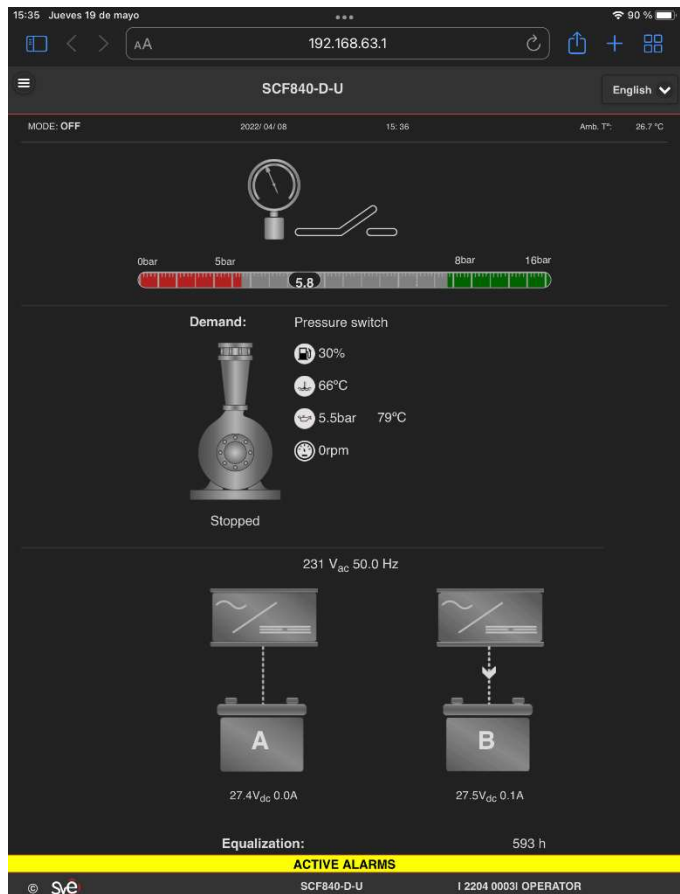
CONTROL PANEL DISPLAY



Available information

- OPERATING MODE
- PUMP ROOM TEMPERATURE
- BATTERY VOLTAGE AND CHARGER CURRENT
- REMAINING TIME UNTIL BATTERY EQUALISATION
- MOTOR QUANTITY MEASURING INSTRUMENTS
- CURRENT DATE AND TIME (ACCURACY: S)
- MAINS VOLTAGE AND FREQUENCY
- ACCUMULATED PUMP RUNNING HOURS AND MINUTES
- PUMP DEMAND TRANSDUCER AND PRESSURE SWITCH
- ALARM DISPLAY BAND

EMBEDDED WEB DISPLAY





SVE, S. L.

Parque Tecnológico, Albert Einstein 36-B
01510 Miñano (Álava)
ESPAÑA

www.svecorp.com